

- High capacity 3 Ah Li-ion battery
- Compact size (L x H x W): 6-9/16" x 8-3/4" x 2-3/8"
- Light weight (incl. battery): 3.3 lbs.
- High power: 1,640 in.lbs.
- Variable speed/reversible
- Brushless motor and electronic switch
- 3 Speeds (High/Medium/Low)
- 1/2" Square chuck
- Charging Time (using EY0L80B charger)\*:  
Usable: 35 minutes Full: 50 minutes
- Electronic performance monitoring system
- Flash light included
- Electric brake
- LED work light
- Belt hook
- With an extra battery pack as standard equipment



Typical Application

- Bolt + Nut fastening
- Assemble and disassemble scaffolding
- Long wood screw/lag screw fastening

	High/Hard Mode	Medium Mode	Low/Soft Mode
Max. Torque	1,640 in.lbs.*1	750 in.lbs.*2	440 in.lbs.*3
Speed at No Load	0-2,300 rpm	0-1,400 rpm	0-1,000 rpm
Impact/min.	0-3,000 ipm	0-2,800 ipm	0-2,000 ipm

\*1 M16 High tensile bolt tightening for 3 sec.  
\*2 M10 High tensile bolt tightening for 3 sec.  
\*3 M8 High tensile bolt tightening for 3 sec.

Standard Accessory

1/4" hex quick change chuck EY9HX110E



High power 1,640 in.lbs. (Forward and Reverse Torque)

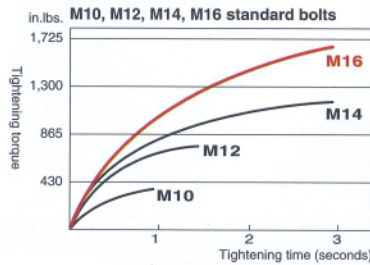
Compatible with standard M16 bolts

By using a large hammer, hitting power is dramatically increased.



M16 Standard bolts can be securely fastened in approximately 3 seconds.

\*Appropriate fastening power varies depending on the quality or size of the screws and the material in which the bolts are screwed into. Use the appropriate setting for the bolts during work. The graph on the left is reference values only. (Values change depending on tightening conditions).



White LED light with condenser lens

Even in the dark, areas for fastening screws can be clearly seen.



Flashing lamp indicates low battery

Three levels of impact power



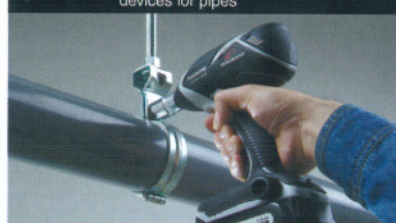
Adjustable torque levels for a clean finish!

When the tightening torque level is too high, small screws are tightened faster but screw heads can be stripped off. In this case, select the torque power to "High", "Medium" or "Low". Power can be selected depending on the work and materials.

Recommended bolt size: High/Hard M10~M16  
For constructing iron frames



Recommended bolt size: Medium M6~M8  
For the installation of support devices for pipes



Recommended bolt size: Low/Soft M6  
For assembling racks and fences

